

DRAWING NUMBER  
**26-248**

# PLAT OF JUPITER CRESTA UNIT ONE

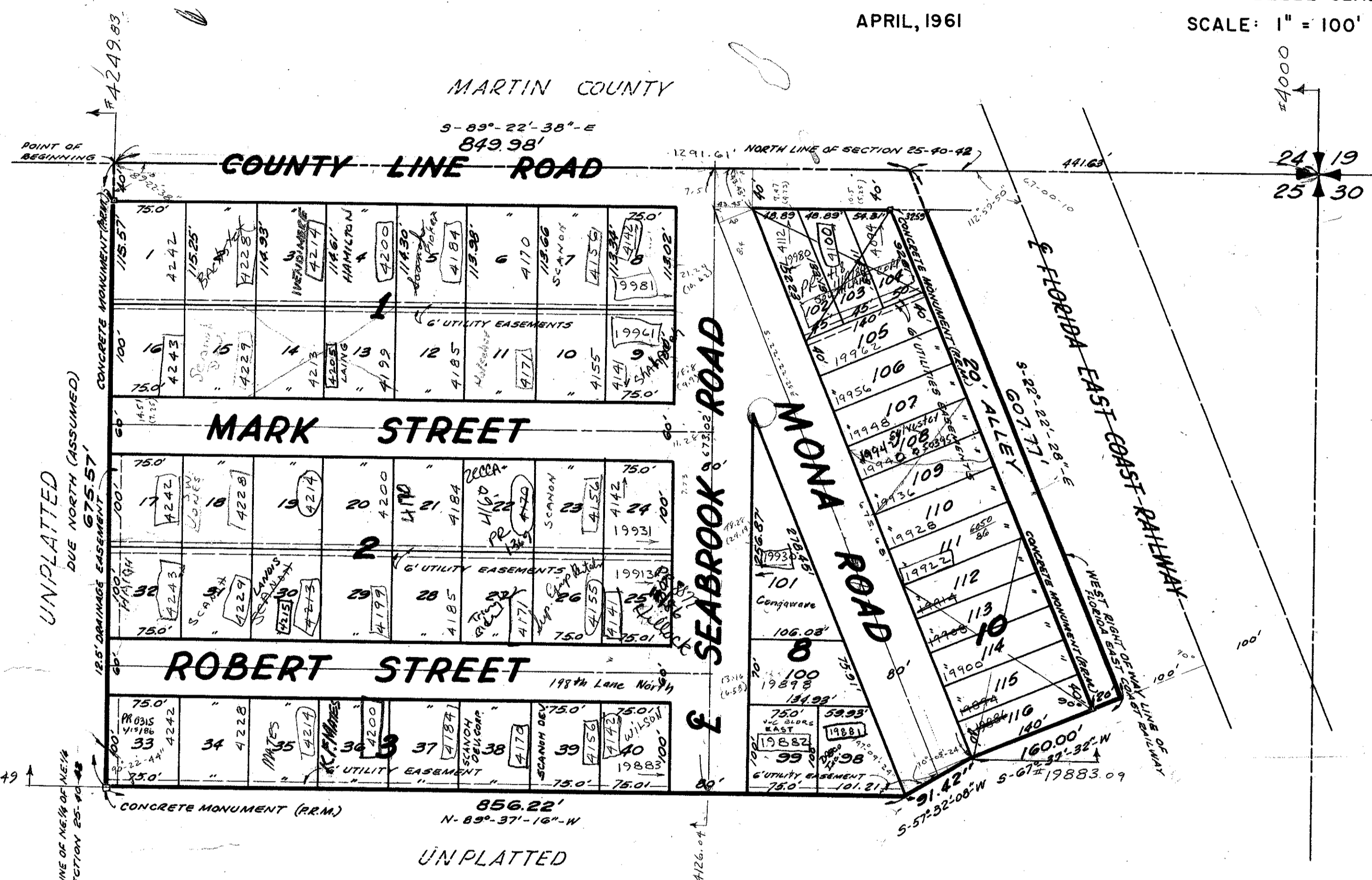
**248**

A PART OF THE NORTHEAST QUARTER OF THE NORTHEAST QUARTER OF  
SECTION 25 - TOWNSHIP 40 SOUTH - RANGE 42 EAST,  
PALM BEACH COUNTY, FLORIDA

PREPARED BY  
**E. ELLIOTT GROSS & ASSOCIATES, INC.**  
ENGINEERS & SURVEYORS

WEST PALM BEACH - DELRAY BEACH - BELLE GLADE  
APRIL, 1961 SCALE: 1" = 100'

STATE OF FLORIDA  
COUNTY OF PALM BEACH  
This Plat was filed for record on  
April 26, 1961, day of April, 1961  
at 2:48 p.m. on page 248  
ALEX KENNEL, Clerk Circuit Court  
By *Betty B. W.*



### DEDICATION

STATE OF FLORIDA  
COUNTY OF PALM BEACH ss.  
KNOW ALL MEN BY THESE PRESENTS THAT JUPITER CRESTA, INC., A FLORIDA CORPORATION, THE OWNER OF A TRACT OF LAND LYING AND BEING IN THE NORTHEAST 1/4 OF THE NORTHEAST 1/4 OF SECTION 25, TOWNSHIP 40 SOUTH, RANGE 42 EAST, COUNTY OF PALM BEACH, STATE OF FLORIDA, SHOWN HEREON AS JUPITER CRESTA, UNIT ONE AND MORE PARTICULARLY DESCRIBED AS FOLLOWS:  
BEGINNING AT THE NORTHWEST CORNER OF THE NORTHEAST QUARTER OF THE NORTHEAST QUARTER OF SECTION 25, TOWNSHIP 40 SOUTH, RANGE 42 EAST, PALM BEACH COUNTY, FLORIDA; THENCE, ON AN ASSUMED BEARING OF SOUTH 89°-22'-38"-E, EAST ALONG THE NORTH LINE OF SAID SECTION 25, A DISTANCE OF 849.98' TO A POINT IN THE WEST RIGHT OF WAY LINE OF THE FLORIDA EAST COAST RAILWAY; THENCE SOUTH 22°-22'-28"-E, ALONG THE SAID WEST RIGHT OF WAY LINE, A DISTANCE OF 607.77'; THENCE SOUTH 67°-37'-32"-WEST, A DISTANCE OF 160.00'; THENCE SOUTH 57°-52'-08"-WEST, A DISTANCE OF 81.42'; THENCE NORTH 59°-27'-16"-WEST, A DISTANCE OF 856.22'; THENCE DUE NORTH ALONG THE WEST LINE OF THE SAID NORTHEAST QUARTER OF THE NORTHEAST QUARTER, A DISTANCE OF 675.57' TO THE POINT OF BEGINNING, LESS THE NORTH 80' THEREOF, MEASURED AT RIGHT ANGLES, FOR ROAD RIGHT OF WAY.

HAVE CAUSED THE SAME TO BE SURVEYED AND PLATTED, AS SHOWN HEREON AND DO HEREBY DEDICATE TO THE PERPETUAL USE OF THE PUBLIC, AS PUBLIC HIGHWAYS THE STREETS, ROADS AND ALLEY SHOWN HEREON AND THE EASEMENTS SHOWN HEREON FOR CONSTRUCTION AND MAINTENANCE OF PUBLIC UTILITIES AND DRAINAGE.

IN WITNESS WHEREOF, THE SAID CORPORATION HAS CAUSED THESE PRESENTS TO BE SIGNED BY ITS PRESIDENT AND ATTESTED BY ITS SECRETARY, AND ITS CORPORATE SEAL AFFIXED HERETO, BY AND WITH THE AUTHORITY OF ITS BOARD OF DIRECTORS, THIS 20th DAY OF APRIL, A.D. 1961.

ATTEST  
BY: *Wynne M. Costel Jr.* SECRETARY  
BY: *Wynne M. Costel* PRESIDENT

### ACKNOWLEDGEMENT

STATE OF FLORIDA  
COUNTY OF BROWARD ss.  
I HEREBY CERTIFY THAT ON THIS DAY PERSONALLY APPEARED BEFORE ME, AN OFFICER DULY AUTHORIZED TO ADMINISTER OATHS AND TAKE ACKNOWLEDGEMENTS, WYNNE M. COSTEL AND WYNNE M. COSTEL, JR., PRESIDENT AND SECRETARY, RESPECTIVELY, OF JUPITER CRESTA, INC., TO ME WELL KNOWN AND KNOWN TO ME TO BE THE INDIVIDUALS DESCRIBED IN, AND WHO EXECUTED THE FOREGOING DEDICATION, AND THEY ACKNOWLEDGED BEFORE ME THAT THEY EXECUTED THE SAME AS SUCH OFFICERS OF SAID CORPORATION, BY AND WITH THE AUTHORITY OF ITS BOARD OF DIRECTORS, FOR THE PURPOSES THEREIN EXPRESSED, AND THAT THEIR ACT AND DEED WAS THE ACT AND DEED OF SAID CORPORATION.  
WITNESS MY HAND AND OFFICIAL SEAL OF SAID COUNTY OF BROWARD, STATE OF FLORIDA, THIS 20th DAY OF APRIL, A.D. 1961.

MY COMMISSION EXPIRES January 30, 1965  
*Carolyn B. Monegue*  
NOTARY PUBLIC

### CERTIFICATE

STATE OF FLORIDA  
COUNTY OF PALM BEACH ss.  
I HEREBY CERTIFY THAT THE PLAT SHOWN HEREON IS A TRUE AND CORRECT REPRESENTATION OF A SURVEY, MADE UNDER MY DIRECTION, OF THE ABOVE DESCRIBED PROPERTY, AND THAT SAID SURVEY IS ACCURATE TO THE BEST OF MY KNOWLEDGE AND BELIEF, AND THAT PERMANENT REFERENCE MONUMENTS (R.E.M.) HAVE BEEN SET AS REQUIRED BY LAW.

SUBSCRIBED AND SWORN TO BEFORE ME THIS 26th DAY OF APRIL, A.D. 1961

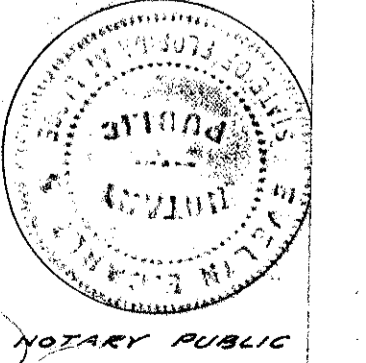
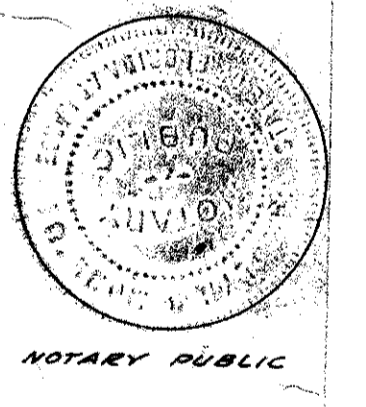
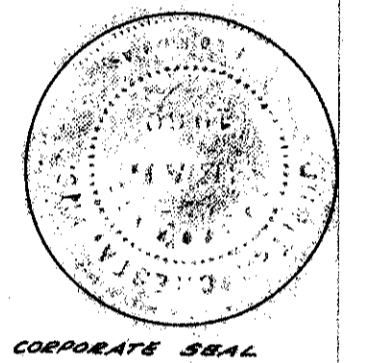
*Carolyn C. Carlton*  
NOTARY PUBLIC  
Plotted B.W.

MY COMMISSION EXPIRES MARCH 7, 1964.

NOTE:  
BUILDING SET-BACK LINES SHALL BE AS REQUIRED BY THE PALM BEACH COUNTY ZONING ORDINANCE. THERE SHALL BE NO BUILDINGS OR ANY KIND OF CONSTRUCTION OR THE PLANTING OF TREES OR SHRUBS, ON DRAINAGE EASEMENTS.

APPROVED: June 6 A.D. 1961  
BOARD OF COUNTY COMMISSIONERS

BY: *Raye Dotal* CHAIRMAN  
BY: *Arthur M. Meade* COUNTY ENGINEER



**25/40/42**  
**26-248**